

## READY FOR INSTALLATION INFORMATION SHEET

QUADRA SPARKLING (Water-Cooled)

### Before the installation

#### CABINET SPACE

**Width:**

Minimum: 600mm

**Height:**

Minimum: 500mm

#### POWER

2 x 13amp sockets

Unit supplied with a flex cord and plug.

#### WATER

2 x 15mm (½") stop-tap with a male thread should be installed in an easily accessible position. Minimum dynamic water pressure of 2.5 bar.

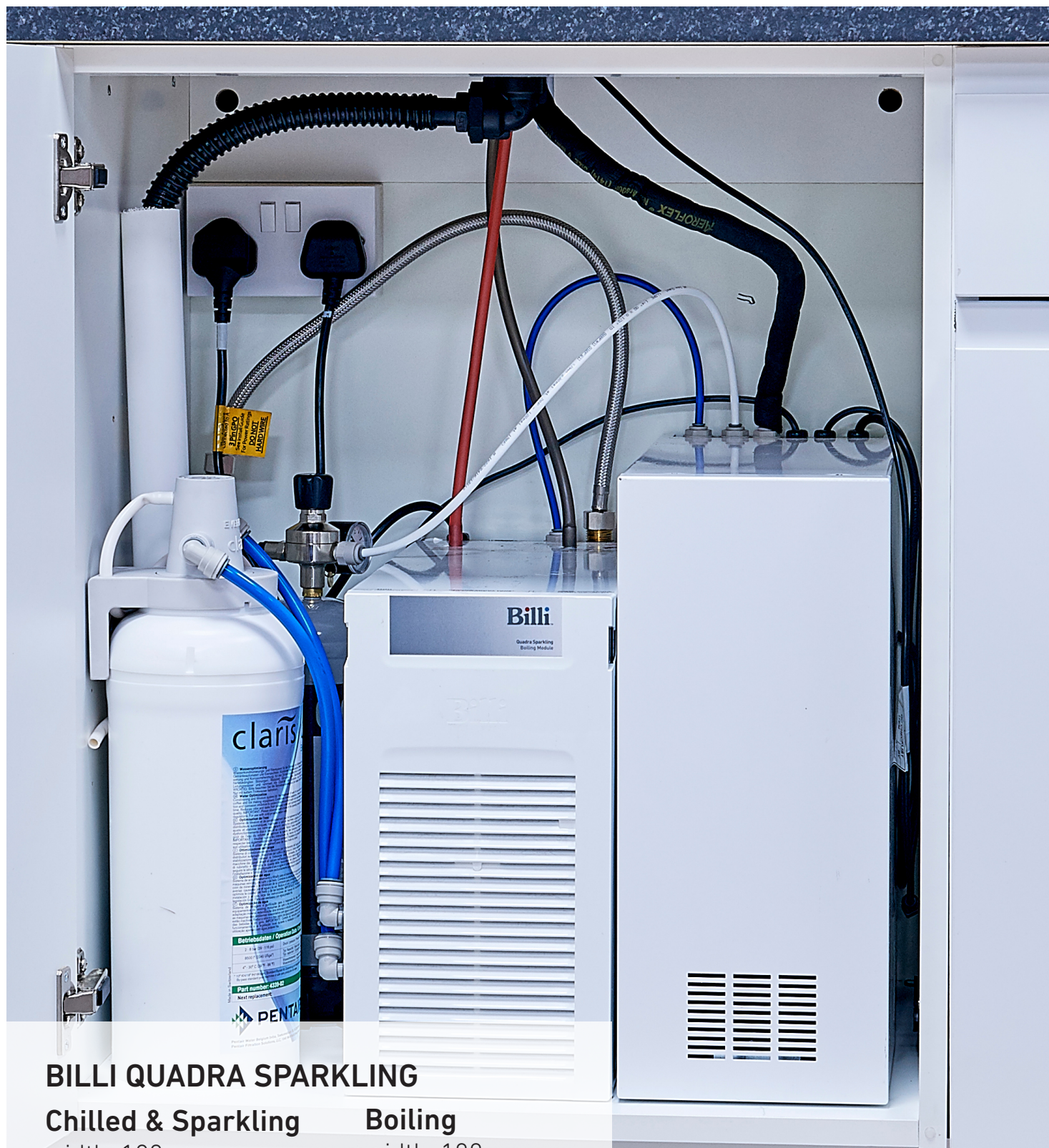
#### WASTE

1½" upstand or an appliance spigot on sink waste.  
(only applicable if drainage font is to be installed)





## Installation complete QUADRA SPARKLING



### **BILLI QUADRA SPARKLING**

#### **Chilled & Sparkling**

width: 180mm  
height: 420mm  
depth: 460mm

#### **Boiling**

width: 180mm  
height: 340mm  
depth: 460mm